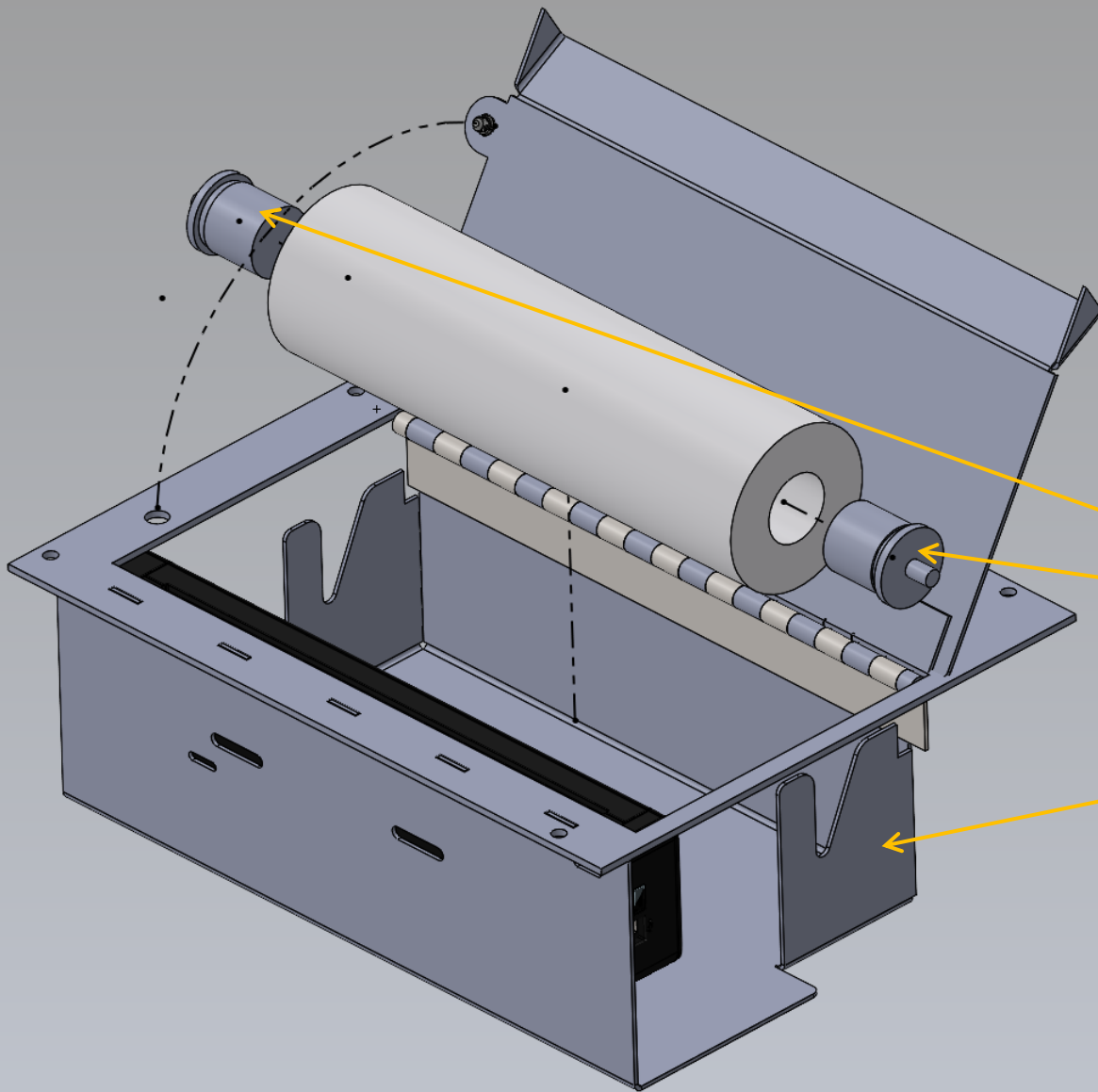


EMERGENCY EQUIPMENT

INV-CON-SN-XXXX-PNTR

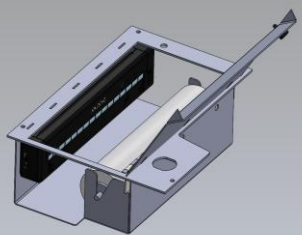
INSTALLATION INSTRUCTIONS FOR PRINTER / PAPER ASSEMBLY.



EXPLODED VIEW
SHOWING DETAILED
PARTS.

PARTS INCLUDED WITH
ASSEMBLY -

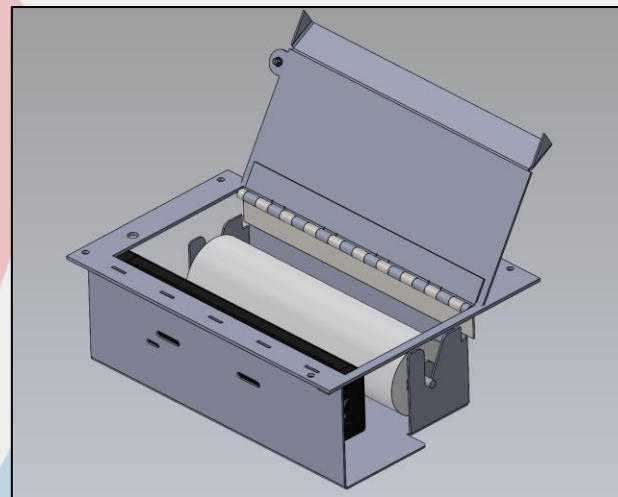
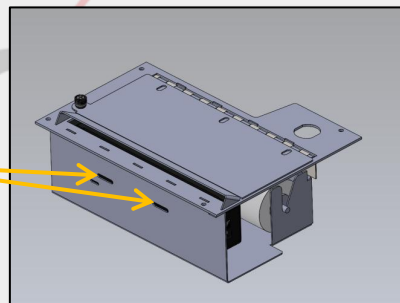
- 1 SET PAPER ROLL
INSERTS.
- 1 PRINTER ASSEMBLY
- CONSOLE SCREWS



STEP 1 –

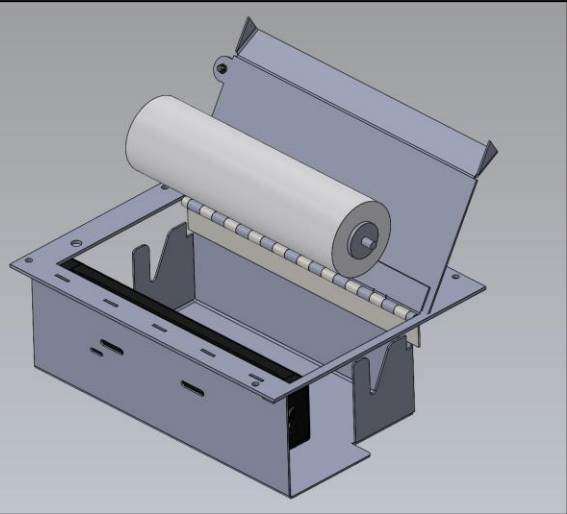
INSTALL PRINTER INTO ASSEMBLY.

ASSEMBLY HAS SLOTS/HOLES
FOR BOTH POCKETJET 7 AND
PRINTEK I-80



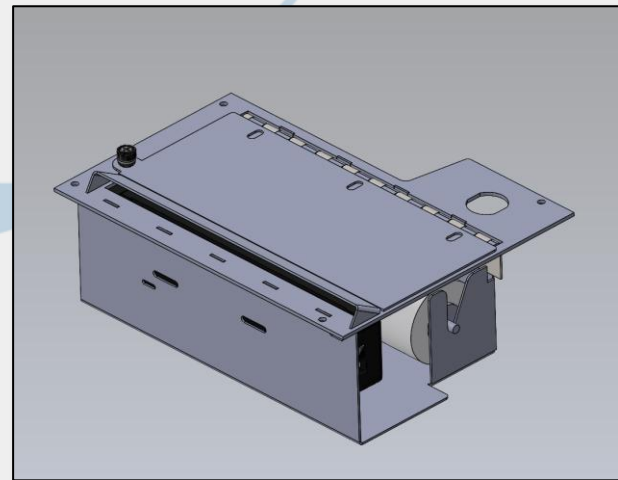
STEP 3 –

INSERT PAPER AND
DOWEL ASSEMBLY
INTO PRINTER BOX



STEP 2 –

INSERT PLASTIC
DOWELS INTO PAPER
ROLL



STEP 4 –

CLOSE LID AND
SECURE CAPTURED
SCREW. INSERT
ASSEMBLY INTO
CONSOLE.



1616 MARLBOROUGH AVE. RIVERSIDE, CA 92507

FOR TECHNICAL ASSISTANCE WITH INSTALLATION OR
OTHER QUESTIONS, PLEASE CALL (951) 222-2270

OR EMAIL SUPPORT@IDSMP.COM

Thank you for your business!