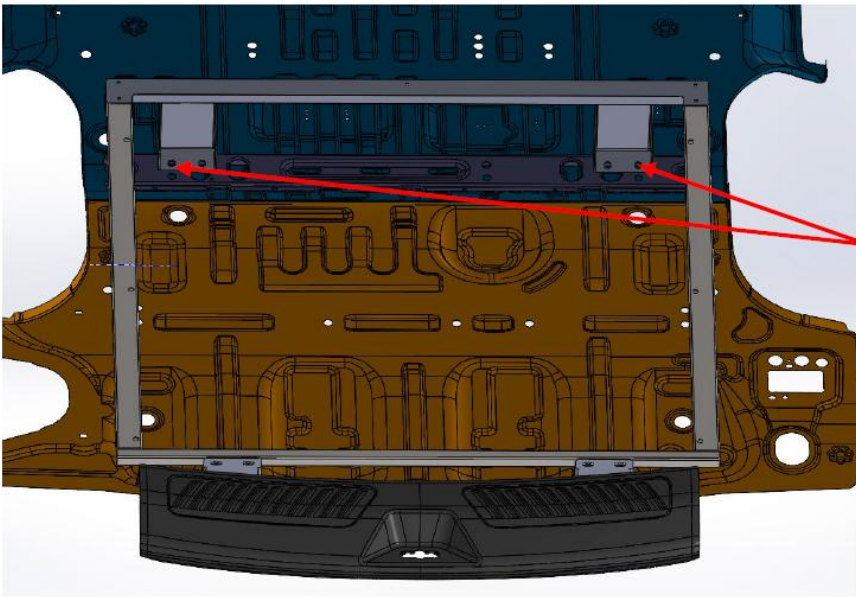


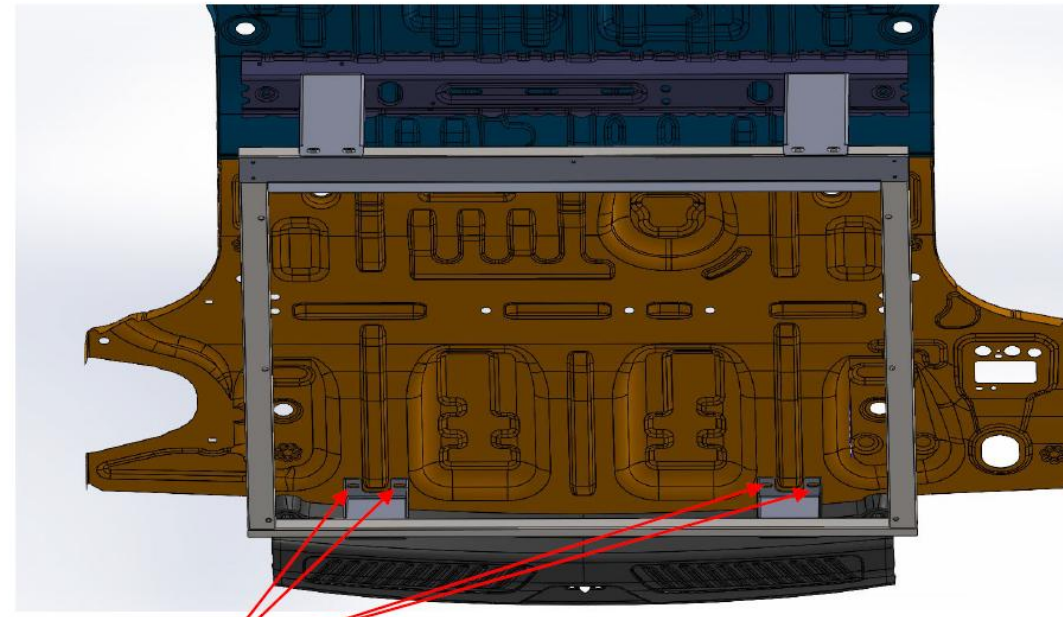
EMERGENCY EQUIPMENT

INV-BOX-MK-TAH21-TBM

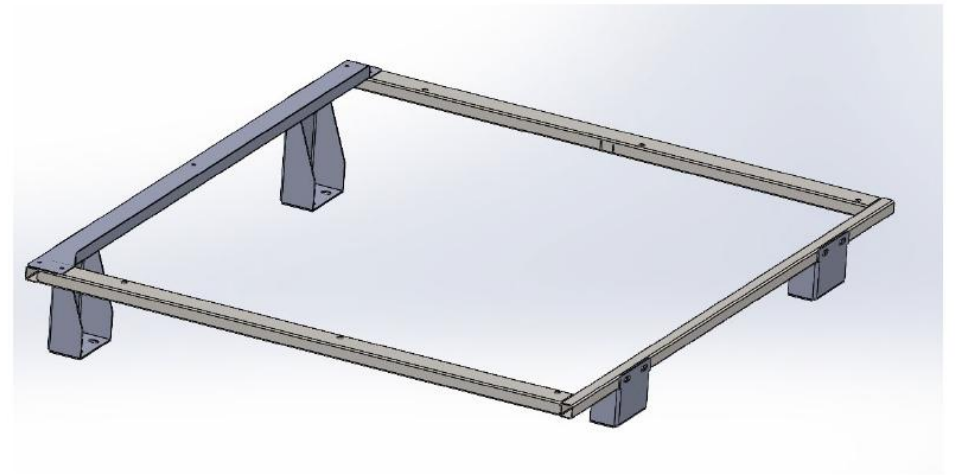
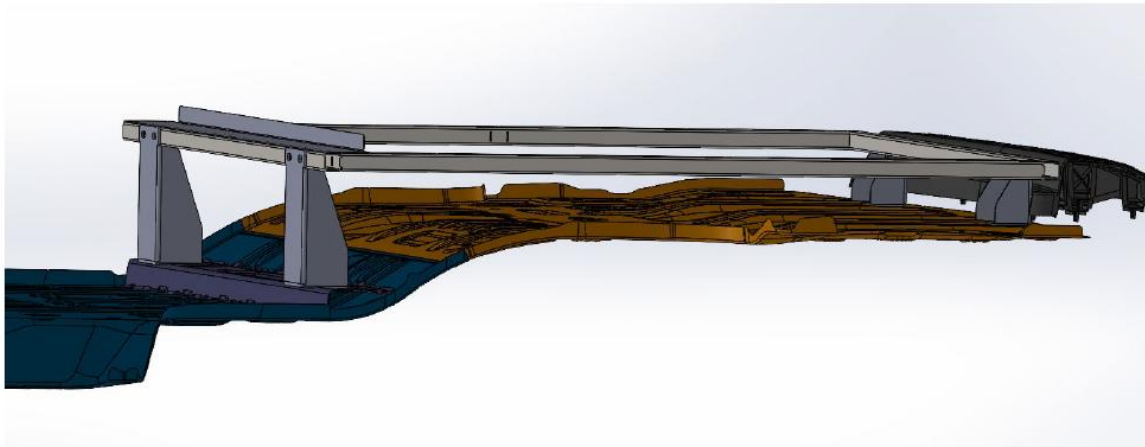
INSTALLATION INSTRUCTIONS



(1) Assemble mounts to frame as shown. Place mounts over standard factory threaded holes (only outside holes on mounts are utilized they may have black tape over them), and install 3/8-16 x 1" bolts



- (2) Drill 3/8 hole for 1/4 inch threaded plus nuts scrape any sealant from around holes and under mounts so they fit flat.
- (3) install plus nuts, and using 1/4 hex heads, tighten.
- (4) Tighten all remaining bolts and screws
- (5) Remove bottom drawers on boxes as necessary, set box on top of frame, insert 1/4-20 screws and tighten. Re-install drawers if necessary





1616 MARLBOROUGH AVE. RIVERSIDE, CA 92507

FOR TECHNICAL ASSISTANCE WITH INSTALLATION OR  
OTHER QUESTIONS, PLEASE CALL (951) 222-2270

OR EMAIL [SUPPORT@IDSMP.COM](mailto:SUPPORT@IDSMP.COM)

*Thank you for your business!*